



Denture and Partial Care

By: Brittney Wappes

Content Advisors: Carol Nguyen, MS, RDH

Beatriz Hicks, MA, RDH

Dental Hygiene Care Series

Objectives

- Discuss proper denture care
 - » Maintenance
 - » Cleaning
 - » When dentures are not in use
- Discuss infectious diseases caused by improper denture care
- Proper application of dentures



Maintenance

- Handle dentures with great care
 - » Standing over sink or towel to avoid dropping/breaking
- Brush/rinse daily
 - » Brushing helps remove plaque and food, also helps prevent stains
 - » Rinse dentures after every meal
 - » Use a soft-bristled toothbrush for “natural teeth”


Denture Toothbrush





Cleaning



- Cleaning with denture solution
 - » Don't use 
 - Household cleaners/toothpaste (TOO ABRASIVE)
 - Bleach can whiten pink portion of denture
 - Listerine or alcoholic solutions can cause drying/cracking of dentures
 - » Use
 - Denture paste/gel or mild non-toxic cleansing solution
 - Professional Denture solution
- *Ultrasonic cleaner (used in dental offices)



NOT in USE

- Dentures need to be kept moist so they don't dry out or lose shape
- Place in denture solution
 - » Careful if denture has metal attachments (may tarnish when placed in soaking solution, ask DDS for best method)
 - » **NEVER** soak in hot water, could warp the denture/partial



Change Solution Daily



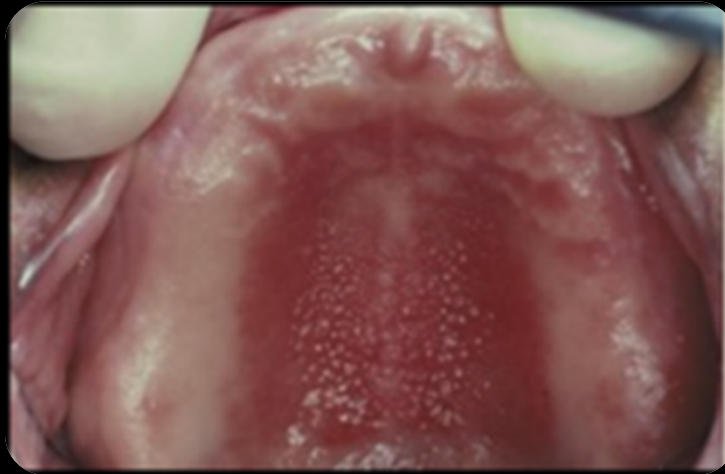
Denture-Induced Fibrous Hyperplasia

- Epulis Fissuratum
 - » Casued by ill-fitting denture



Inflammatory Papillary Hyperplasia of Palate

- Form of denture stomatitis
 - » Associated with wearing dentures 24hrs/day
 - » Multiple red papillary projections on palate



Denture Application

- Make sure dentures are clean and moist before applying into the mouth
- Proper amount of adhesive
- If denture is causing irritation you can apply a lubricant to help with application

Improper Denture Fit

- Ill fitting- due to weight loss (more than 10 lbs.) will need to be re-lined for proper fit
- Find yourself having trouble eating
- Making noise while you eat
- Dentures are falling out of your mouth/place
- If having trouble with fitting your dentures/partial contact your DDS immediately

Appropriate Denture Adhesive





Take Care Dentures!



Resources

1. Caring for Your Dentures: Cleaning and Repairing Dentures. (n.d.).
<http://www.webmd.com/oral-health/guide/caring-dentures>
2. How to Apply Denture Adhesive. (n.d.).
<http://www.wikihow.com/Apply-Denture-Adhesive>
3. Care of Dental Prostheses. (BS 247-8). BS, Esther M Wilkins, RDH, DMD. Clinical Practice of the Dental Hygienist, 11th Edition. Lippincott Williams & Wilkins, 01/2012. <vbk:9781469821733#outline(31.3.)(31.5)(31.8)(31.11)>.